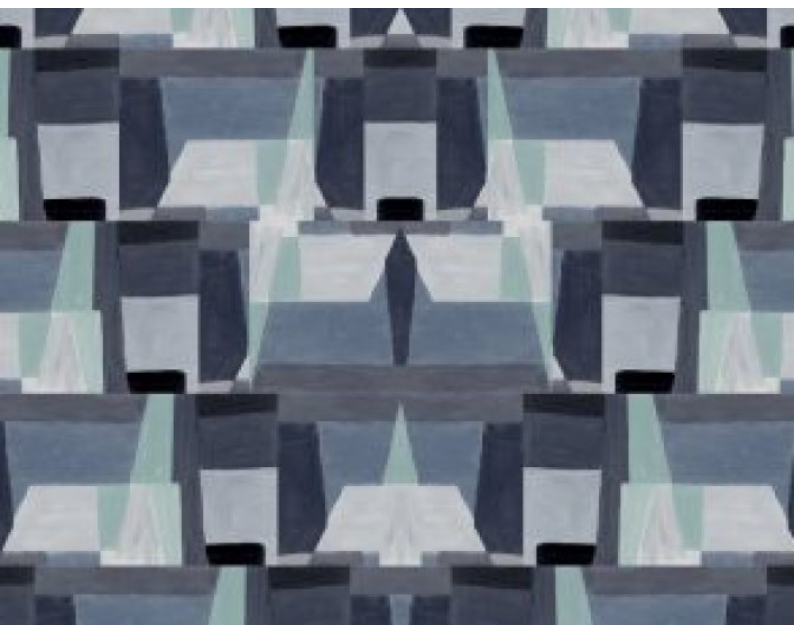


Pamperlone - Inspired by the visionary architect Ernő Goldfinger, the Ernő Collection by Jan Erika and in collaboration with Muraspec wallcoverings, captures the essence of the iconic Trellick Tower in West London. Designed and built in the late 1960s and 70s, Trellick Tower stands as a testament to the strength and boldness of brutalist architecture. The Ernő Collection embraces the duality and timeless artistry of the bold building structure. Each design within the collection reflects the powerful lines and forms of brutalist design while introducing a softer side with beautiful colours and tonal hues. Our collection features scaled patterns and bold colours, balanced with light, delicate motifs. Each new wallcovering design within the collection has been crafted to embody strength and resilience, yet exudes a calm and soothing presence. Much like Trellick Tower, the Ernő Collection is built with design and style at its core. We invite you to explore and find the beauty within, appreciating the harmonious blend of strength and elegance that defines our wallcovering collection.



Product Details

Design:	Pamperlone
SKU:	13340
Colour Description:	Multi
Width:	60cm
Length:	10cm
Sold By:	Made to Order
Construction Type:	Fabric backed Vinyl
Backer:	Non woven polyester
Weight:	350gsm
Fire rating:	Euro Class ,B-s2 ,d0

CLEANABILITY



Fully Washable

LIGHTFASTNESS



Very good.
(6 out of 8 to BSEN20105)

VOC RATED

A+

CE COMPLIANT

CE

CONTAINS BIOCIDES



Hanging Information

Pattern Repeat:	13.1cm
Pattern Offset:	0CM
Pattern Overlap:	0CM
Recommended Adhesive:	Soft Spatula. Adhesive: Murabond Heavy, On dry lining use Murabond Easy Strip. On Sealed Surfaces use Murabond Sealed Surface Adhesive

AVAILABLE COLOURWAYS IN THIS DESIGN

To view the full range of colourways available in this design, please search 'Pamperlone' using the search function tool on the Fardis website.



BUTT JOINT



BY STRAIGHT HANGING



STRAIGHT MATCH



PASTE TO WALL