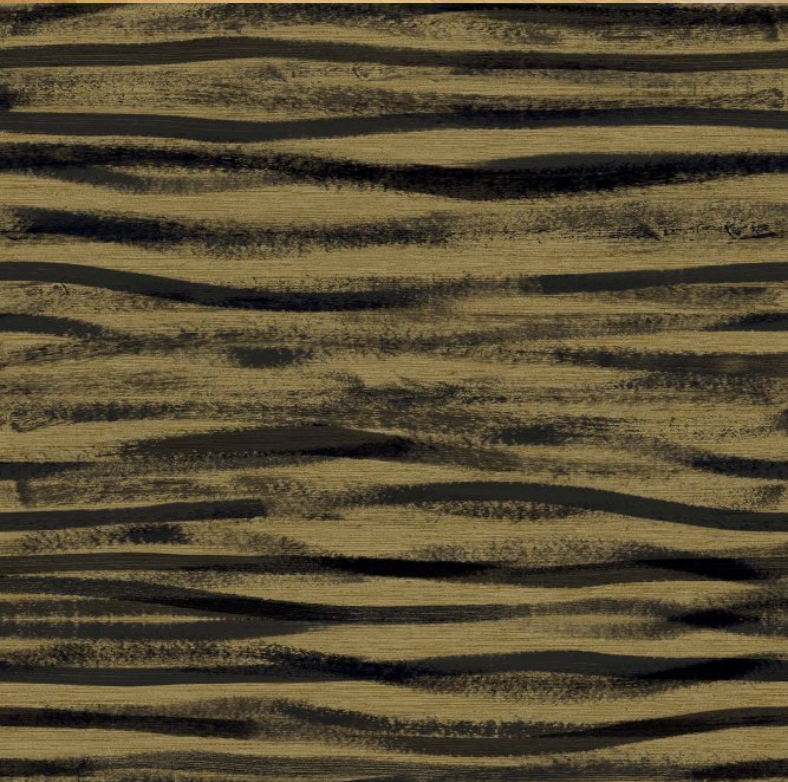


Inspired by Athena—the goddess of wisdom, arts, and strength—this new wallcovering collection embodies the power and creativity of visionary women who shaped the art world. From the raw emotion of jazz to the bold expressions of surrealism, each design carries a sense of wholeness and strength, much like the iconic women who influenced it. Drawing from the spirit of Nina Simone, Georgia O'Keeffe, Maria Callas, Frida Kahlo, and Yayoi Kusama, the Athena Collection translates their unique artistry into striking patterns. Whether it's the soulful intensity of Simone's music, O'Keeffe's organic forms, Callas' dramatic presence, Kahlo's vivid storytelling, or Kusama's avant-garde vision—each design in this collection tells a story. This is a celebration of art, music, and the timeless power of female creativity, woven into designs that speak with boldness and beauty.



### Product Details

<b>Design:</b>	Frida
<b>SKU:</b>	14502
<b>Colour Description:</b>	Mustard
<b>Width:</b>	60CM
<b>Length:</b>	10m
<b>Sold By:</b>	Made to order
<b>Construction Type:</b>	Printed Non-Woven (Non PVC)
<b>Backer:</b>	Non woven Polyester
<b>Weight:</b>	200gsm
<b>Fire rating:</b>	Euro Class, B-s1 ,d0

### CLEANABILITY



Washable

### LIGHTFASTNESS



Very good.  
(6 out of 8 to BSEN20105)

### VOC RATED

**A+**

### CE COMPLIANT

**CE**

### Hanging Information

<b>Pattern Repeat:</b>	80CM
<b>Pattern Offset:</b>	40CM
<b>Pattern Overlap:</b>	0CM
<b>Recommended Adhesive:</b>	Hard Spatula, Adhesive, Murabond Heavy, On dry

### AVAILABLE COLOURWAYS IN THIS DESIGN

To view the full range of colourways available in this design, please search 'Frida' using the search function tool on the Fardis website.



BUTT JOINT



BY STRAIGHT HANGING



STRAIGHT MATCH



PASTE TO WALL

If you require further information about any Fardis product or service please search our website [www.fardis.com](http://www.fardis.com), contact us at [contact@fardis.com](mailto:contact@fardis.com) or call 0333 240 9045