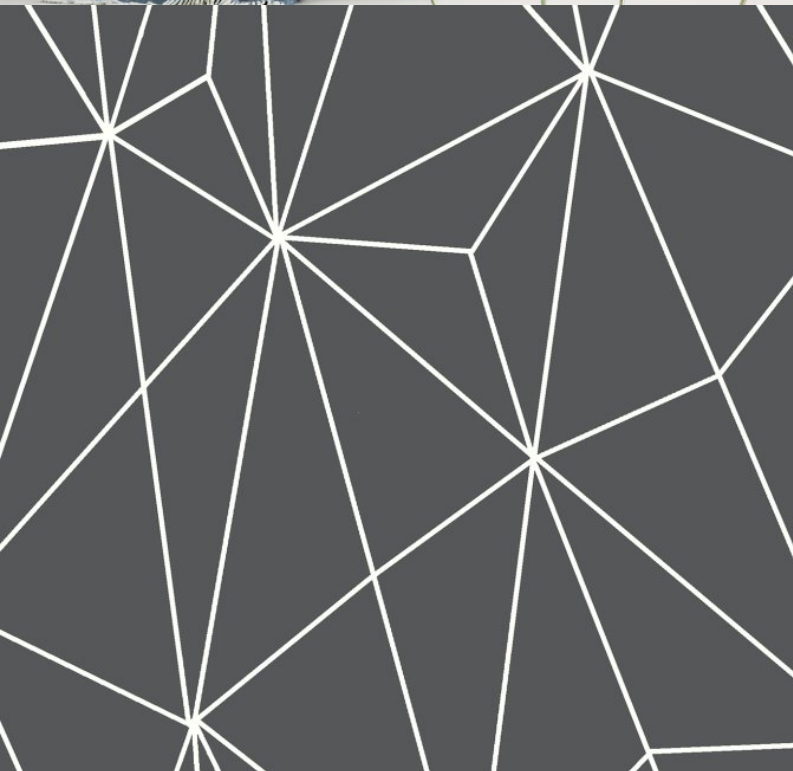


Inspired by a diamond's effects, line is used to suggest reflecting facets. A subtle yet impactful design useful for a myriad of interiors.



### Product Details

<b>Design:</b>	Shard
<b>SKU:</b>	12051
<b>Colour Description:</b>	Grey
<b>Width:</b>	52cm
<b>Length:</b>	10m
<b>Sold By:</b>	Made to order
<b>Construction Type:</b>	Digital Print - FBV
<b>Backer:</b>	Non woven Polyester
<b>Weight:</b>	350gsm
<b>Fire rating:</b>	-

### CLEANABILITY



Spongeable

### LIGHTFASTNESS



Very good.  
(6 out of 8 to BSEN20105)

### VOC RATED

**A+**

### CE COMPLIANT

**CE**

### CONTAINS BIOCIDES



### Hanging Information

<b>Pattern Repeat:</b>	69.3cm
<b>Pattern Offset:</b>	0cm
<b>Pattern Overlap:</b>	0cm
<b>Recommended Adhesive:</b>	-

### AVAILABLE COLOURWAYS IN THIS DESIGN

To view the full range of colourways available in this design, please search 'Shard' using the search function tool on the Fardis website.



BUTT JOINT



BY STRAIGHT HANGING



STRAIGHT MATCH

If you require further information about any Fardis product or service please search our website [www.fardis.com](http://www.fardis.com), contact us at [contact@fardis.com](mailto:contact@fardis.com) or call 0333 240 9045